



AGES 14+

PREFACE

Dear customers:
Hello!
Thank you for purchasing our flying model. Please read this instruction manual carefully in order to master the skill more quickly and operate this product more safely. In the mean time, please well keep the original of this instruction manual for future reference.

IMPORTANT INSTRUCTION

1. Please fly your helicopter safety and refer to our instruction manual to avoid personal injury and property damage. The company not responsible for any accident or damage resulting from the improper operation.
2. This model not suitable for children who under 14 years.
3. Please fly it in safety and legal environment.
4. Our company will hard to responsible for safety duty of error operation.
5. Please ask help from our dealer at local if you have any problem such as operation, playing and maintenance etc.

SAFTY & CAUTIONS

This R/C flying model is one high dangerous commodity. Please make sure that it should be filed far away from the crowd. Please also pay more attention to the phenomenon such as incorrect assembly or damaged model or incorrect connection of electronic control equipment. Please also pay attention to the flying safety when operating and know more about the accident that may be happened due to your own negligence.

1. Keep it far away from the barrier or crowd.
2. Keep it far away from the moisten environment.
3. Use this product correctly and avoid operating by your own.
4. Keep it far away from the high-speed rotating part and heat source.
5. Please conform to the sequence of power ON/OFF. As the picture below shown, incorrect sequence of power ON/OFF may cause this product out of control and affect your own safety or others. Please form a good habit of switching on or switching off this product correctly.

ABOUT CONTENTS

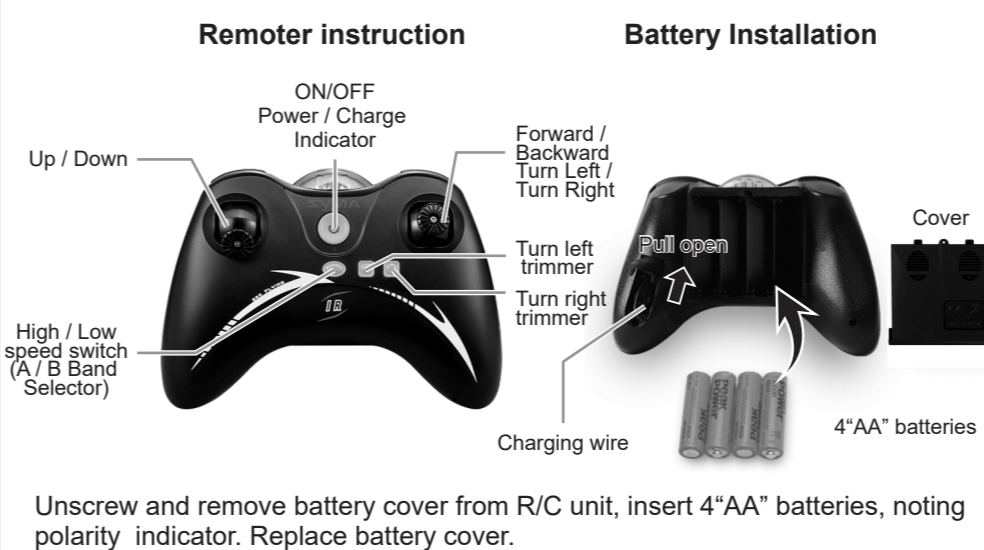
Product included following contents:

- Helicopter
- Remote controller
- Tail blade
- Instruction manual
- Screwdriver



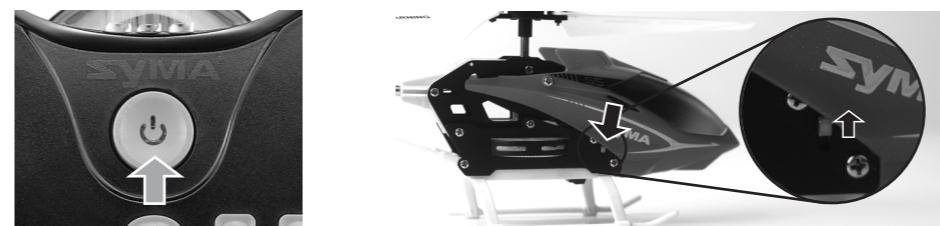
-1-

GET TO KNOW YOUR TRANSMITTER



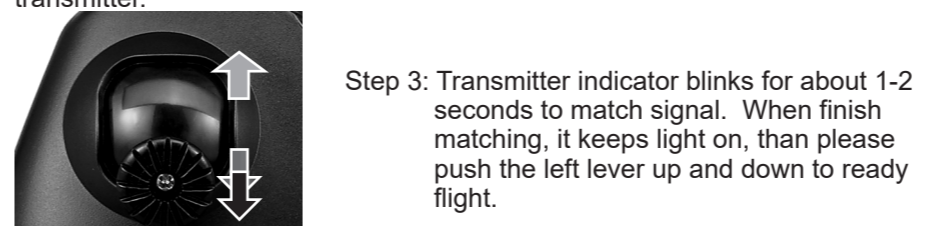
Unscrew and remove battery cover from R/C unit, insert 4*AA* batteries, noting polarity indicator. Replace battery cover.

READY TO FLY YOUR HELICOPTER



Step 1: Press the power switch to turn on the transmitter.

Step 2: Turn on your helicopter.

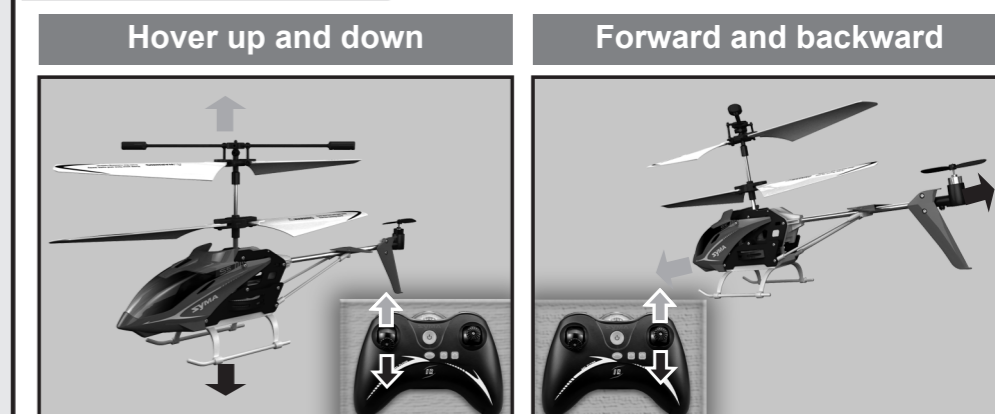


Step 3: Transmitter indicator blinks for about 1-2 seconds to match signal. When finish matching, it keeps light on, than please push the left lever up and down to ready flight.

TIPS: When matching signal, keep the helicopter on horizontal position to fast matching and start a stable flight.

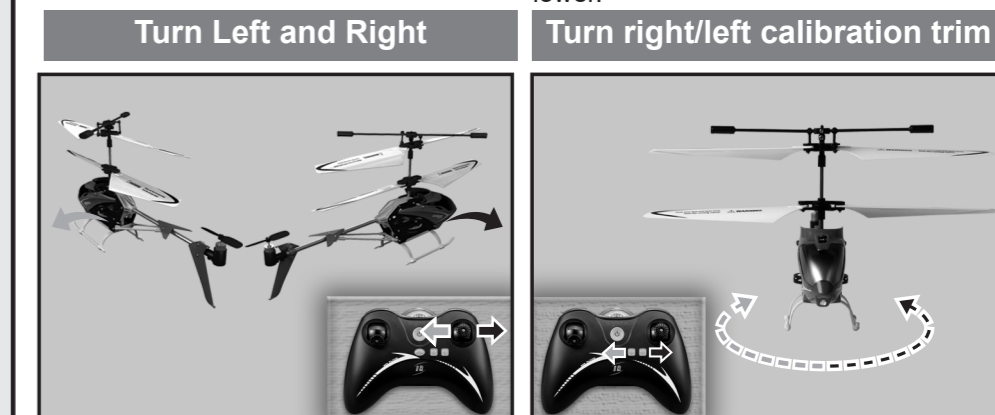
-2-

FLIGHT CONTROL



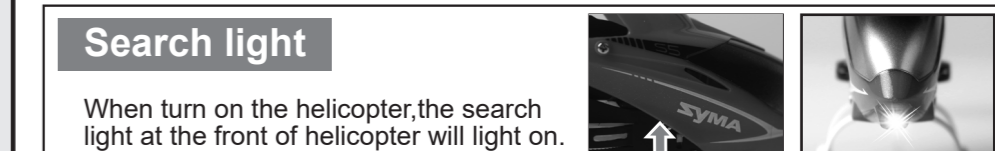
Slowly push the left stick up to make helicopter fly higher, or release the stick a bit to make helicopter fly lower.

Slowly push the right stick up to make helicopter fly forward, or push the stick down to make helicopter fly backward lower.



Slowly push the right stick left to make helicopter fly to left, or push the stick right to make helicopter fly to right.

If helicopter rotates clockwise/counter-clockwise, continually push left/right trim switch until excessive turning stops.



When turn on the helicopter, the search light at the front of helicopter will light on.

Key Description
Low speed: The factory default speed when turn on remote controller.
High speed: Turn on remote controller than press button "A", indicator light flashes twice to be high speed. Press button "A" again, indicator light flashes one time to be low speed again.
A/B band selector: Press button "A" for 2 seconds to choose "A"(indicator light flashes one time) or "B"(indicator light flashes twice).

-3-

3 INSTRUCTION MANUAL

IMPLEMENT STANDARD: GB/T26701-2011

Key features of helicopter

- Special plastic durable body for a good resistance to mill and stable flight. It is suitable for indoor flight.
- A sophisticated built-in gyroscopic auto-stability feature makes for smooth and stable flying.
- Structure module design, Easy operate and maintenance.

All material, dimensions and spare parts included in this instruction are for reference only. The company will not be responsible for any change of printed parts and notify consumer. Any update or change please refer to our website.

BATTERIES CHARGING

Charging helicopter with Remote Controller:

1. Be sure the helicopter power switch is in OFF position.
2. Remove black charging wire from the back of remote controller.
3. Plug charging wire into helicopter than turn on remote controller – transmitter indicator will be red, but will turn blue when the helicopter is fully charged.
4. Unplug the helicopter and replace charging wire for safe keeping.



Charging it for 60-70 minutes and you can fly about 5-6 minutes.

Note: Make sure helicopter power switch to OFF position when charging.

BATTERY CAUTIONS

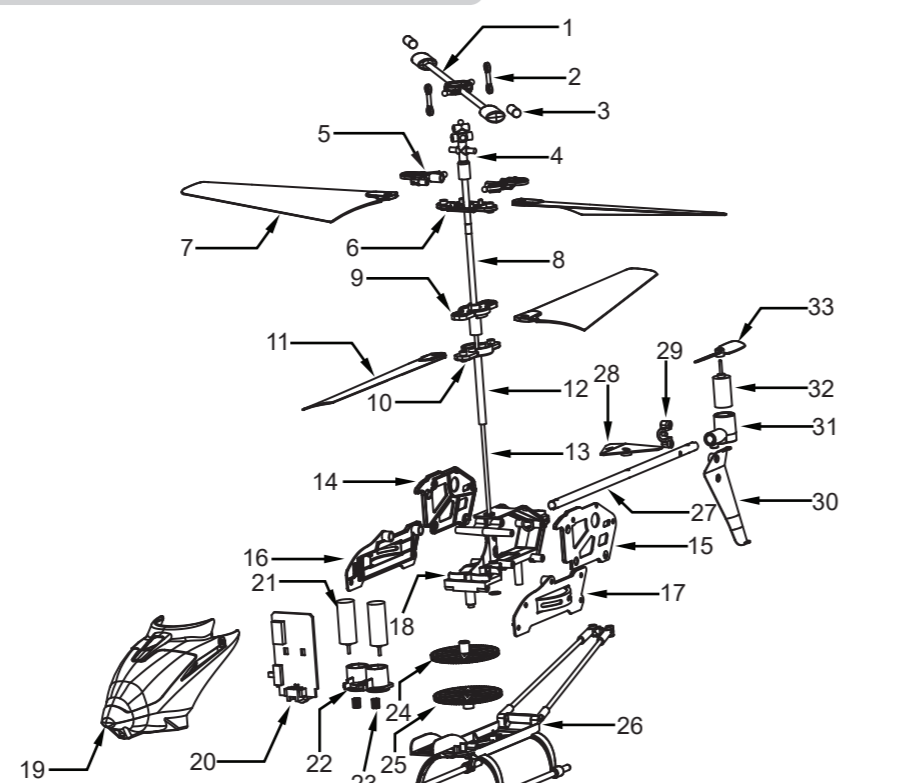
1. Don't use or leave the battery near a heat source such as fire or heater.
2. Adult supervision is required when charging.
3. After flying, don't charge batteries at once to avoid batteries too heat to cause to the fire, make sure it cool down before charging.
4. Don't hit or let batteries fall down when charging to avoid inner short-circuit.
5. After full charging, please take off charging wire in time, otherwise batteries will discharge and charge again, this way will shorten batteries service life.

MAINTENANCE BATTERIES

1. keep the battery in a 18—25 °C cool dry environment.
2. To keep the batteries service life, don't make it discharge and charge repeatably, don't over discharge.
3. Please make batteries full charging when keep in long-term.
4. Regular check the batteries voltage, if the voltage lower than 3v, make it full charging.

-4-

BREAKDOWN & DIAGRAM

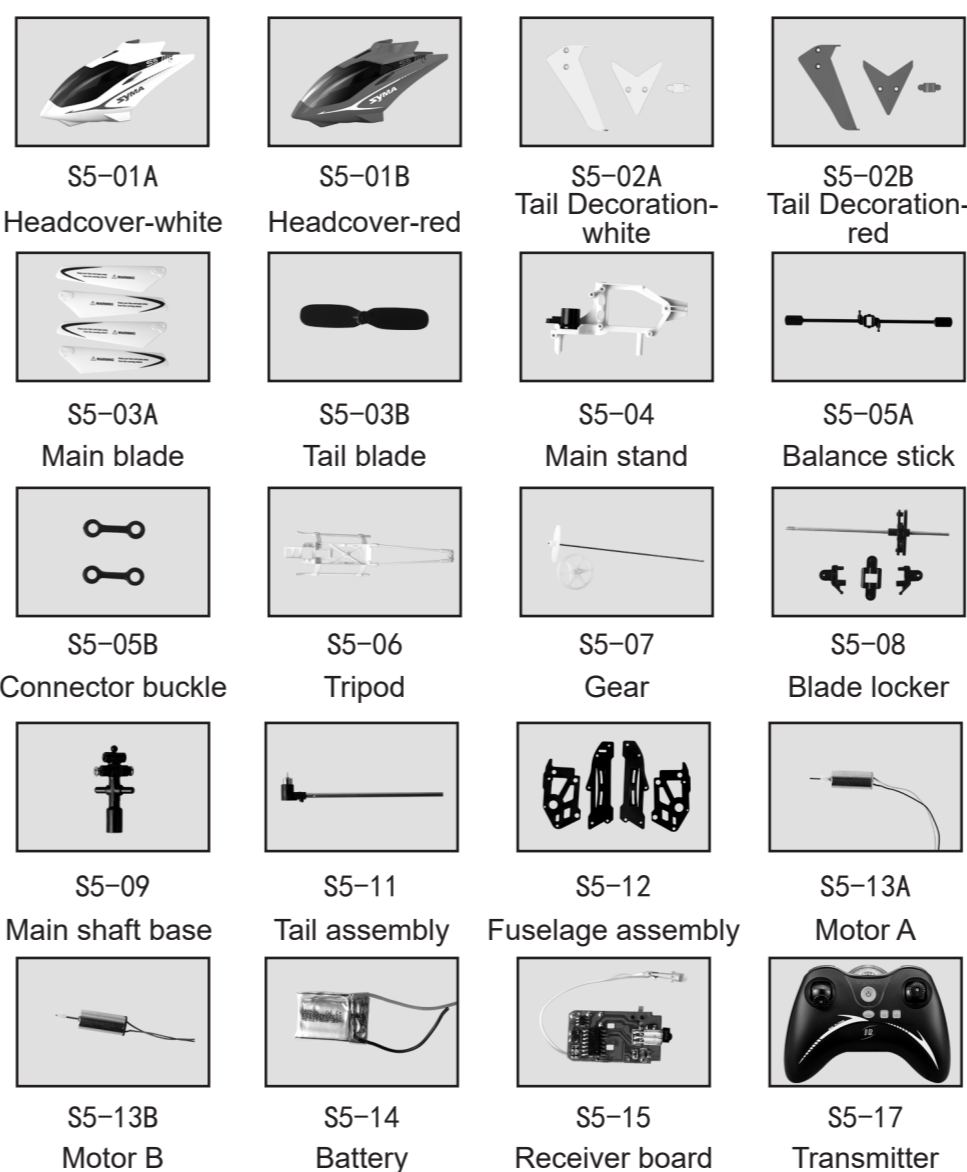


Code	Description	Quantity	Code	Description	Quantity	Code	Description	Quantity
01	Balance stick	1	13	Spindle	1	25	Under blade gear	1
02	Connector buckle	2	14	Up left aluminum plate	1	26	Base rack	1
03	Balance Bar metal parts	2	15	Up right aluminum plate	1	27	Tail tube	1
04	Main shaft base	1	16	Down left aluminum plate	1	28	Tail balancing	1
05	Top blades locker	2	17	Down right aluminum plate	1	29	Tail dangling connecting	1
06	Top blades base	1	18	Main stand	1	30	Tail dangling	1
07	Top blades	2	19	Head cover	1	31	Tail motor seat	1
08	2.0 stainless steel pipe	1	20	Receiver board	1	32	Tail motor	1
09	Below blades locker	1	21	Main motor	2	33	Tail blade	1
10	Below blades edge	1	22	Motor seat	1	34		
11	Below blades 2.5 stainless steel pipe	2	23	Motor teeth	2	35		
12		1	24	Top blade gear	1	36		

-5-

PARTS (not included)

Following have some parts for your choice, you can purchase them from our dealer at local.

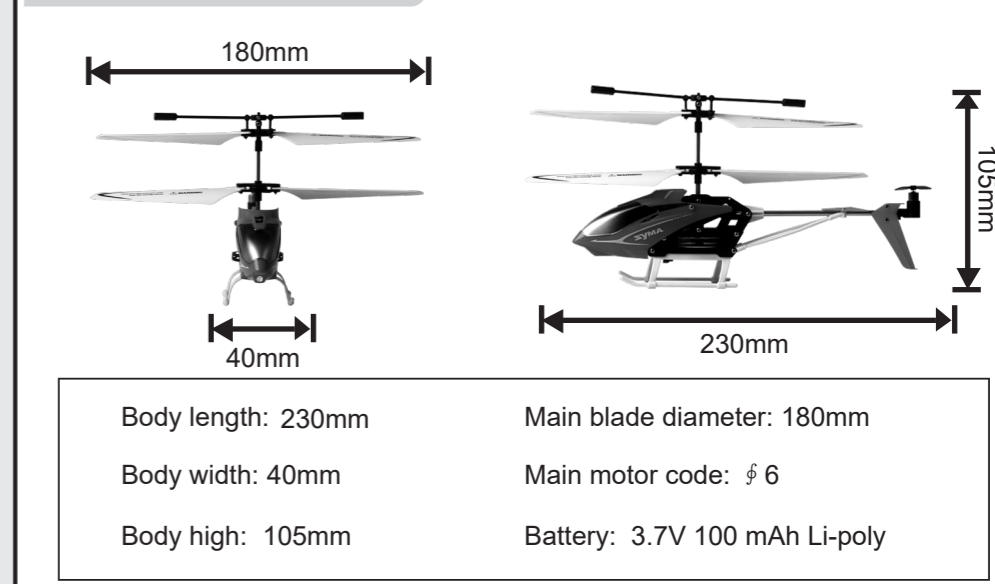


-6-

TROUBLE SHOOTING

Symptom	Cause	Correction
Pegasus can't move	1. Weak battery 2. Controller power weak, indicator flashing. 3. Frequency matching fail.	1. Recharge the Pegasus. 2. Replace controller batteries. 3. Matching frequency again.
Pegasus insensitive reaction	1. Controller power weak. 2. There have interference with same frequency.	1. Replace controller batteries. 2. Choice another place for playing.

MAIN PARAMETER



SPECIFICATIONS AND COLORS OF CONTENTS MAY VARY FROM PHOTO.

-7-